

Contact Details

Before using the product, please check the guide pages at the front of this catalog.

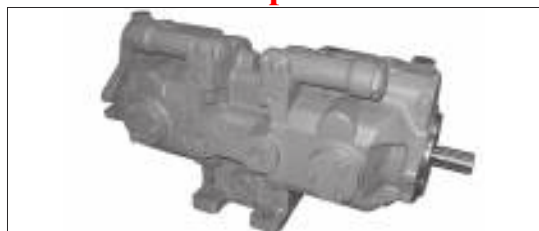
Internet

<https://www.daikinpmc.com/en/>

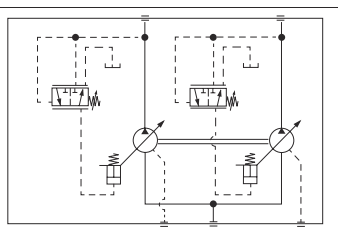
For latest information, PDF catalogs and operation manuals

V1515 series Dual Pump

PDF Compressor Free Version



JIS graphic symbols
for hydraulic system



Nomenclature

V1515 A × × R - 95

1	2	3	4	5	6
---	---	---	---	---	---

1 Model No. (Applicable fluid: petroleum based hydraulic oil)

V1515: V1515 series dual pump

Pump capacity: $14.8 \text{ cm}^3 \times 2$

Not provided with a discharge rate adjusting screw

2 Control method

A: Pressure compensator control

3 Pump pressure adjustment range at end side

1: 0.8 to 7 MPa { 8 to 70 kgf/cm² }

2: 1.5 to 14 MPa { 15 to 140 kgf/cm² }

4 Pump pressure adjustment range at shaft side

1: 0.8 to 7 MPa { 8 to 70 kgf/cm² }

2: 1.5 to 14 MPa { 15 to 140 kgf/cm² }

3: 3.5 to 21 MPa { 35 to 210 kgf/cm² }

5 Direction of rotation, when viewed from the shaft end

R: Clockwise (rightward)

6 Design No. (The design No. is subject to change)

Note: Risers are not provided with the pump. Order them separately as required by referring to the drawing below.

External dimension diagram

